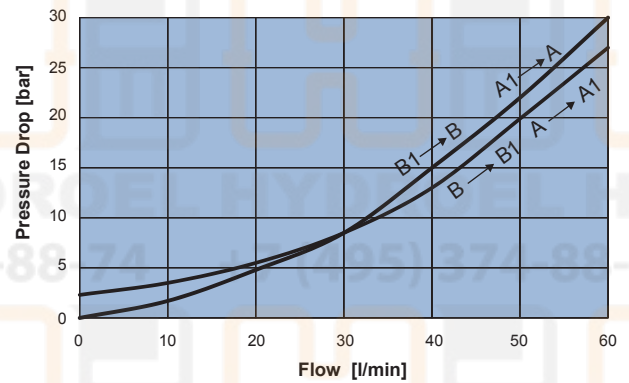
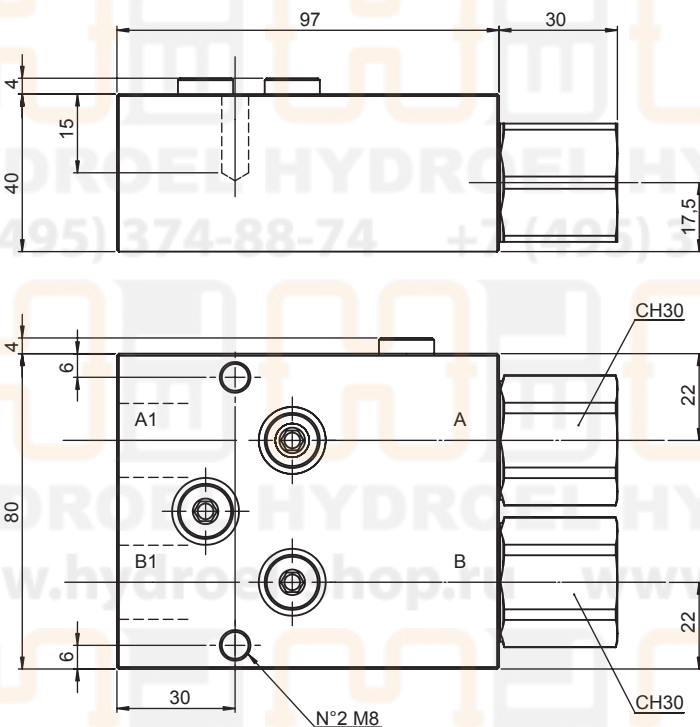
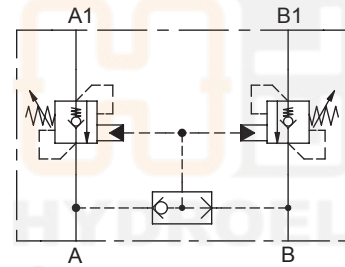


DOUBLE ACTING COUNTERBALANCE VALVE IN LINE WITH AXIAL DISCHARGE

- Flow **60 l/min**
- Max working pressure **350 bar**
- Compensation **Not Compensated**
- Weight **2,4 Kg**



Ordering code

H 5 2 3 0 N **S** **0 0**

PILOT RATIO	
40	4:1

SPRINGS	3
Setting range min.-max. [bar]	211 - 350
Pressure Increase [bar/turn]	120
Standard setting 4 l/min [bar]	350

PORTS	04	54
A,B,A1,B1	G 1/2"	SAE 10