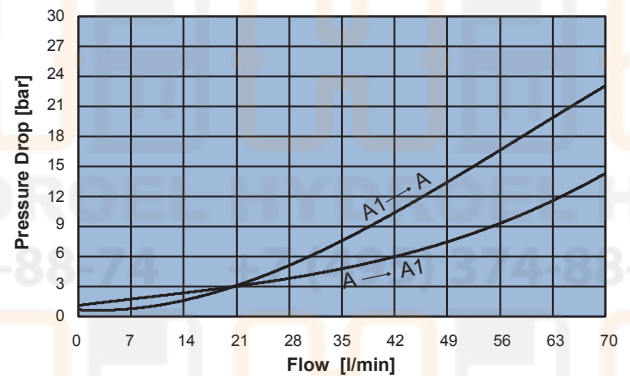
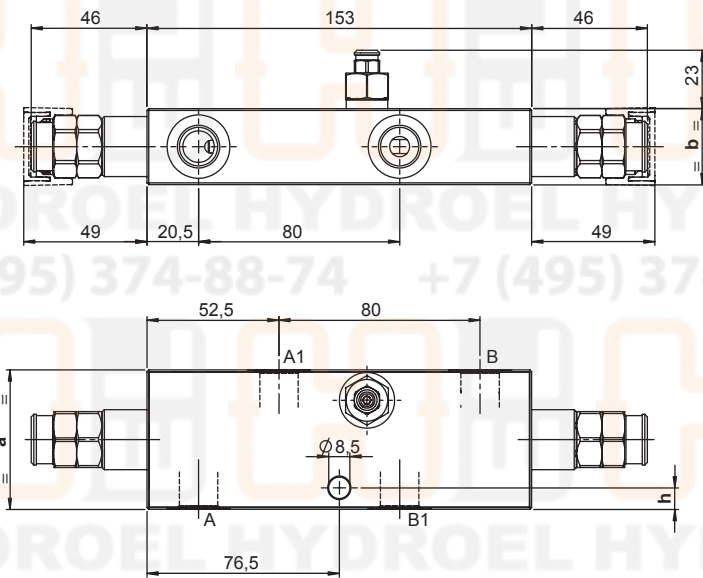
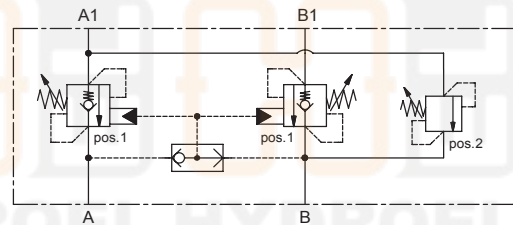


DOUBLE ACTING COUNTERBALANCE VALVE WITH COAXIAL CAVITY

- Flow **70 l/min**
- Max working pressure **350 bar**
- Compensation **Not Compensated**
- Weight G 3/8" **2 Kg**
- Weight G 1/2" **2,3 Kg**
- Tamper proof cap **cod. 9021030190**



Note:

- Antishock valve pos.2 max flow 3 l/min
- Pressure setting must be 30% higher than pressure induced by the load.
- Back pressure can influence the opening pressure (LHD05X-C is recommended for circuits with high back pressure)

	a	b	c	h
03	55	30	38	8,5
04	65	35	43	11

Ordering code

H 5 0 6 0 N **S** **0 0**

PILOT RATIO		SPRINGS		PORTS	
47	4:1+ relief A1-B	3		03	04
		pos.1	pos.2	A,B,A1,B1	G 3/8" G 1/2"
		Setting range min.-max. [bar]	120 - 350 250 - 400		
		Pressure Increase [bar/turn]	114 250		
		Standard setting 4 l/min [bar]	350 bar or 4 l/min 300 bar or 20 cc/min		